

FOR LEASE



8319 Brewerton Road Cicero NY 13039

\$16.00/SF Modified Gross

4,500SF

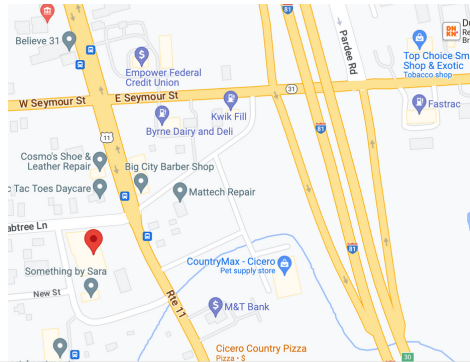
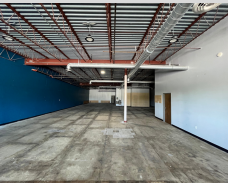
Ample Parking

Front and Rear Access

Less Than .25 Miles to I-81

Easy Access for Rear Deliveries Via Side Street

39' of Frontage on US Route 11



DUANE EDMONDS Exclusive Agent
Licensed Real Estate Salesperson
M - 315.883.7908
315gasguyz@acropolisrealtygroup.com

Acropolis Realty Group
115 E. Jefferson St.
Syracuse, NY 13202
315-396-0493

NICK CAPPARELLI Exclusive Agent
Licensed Real Estate Salesperson
M - 315.558.1640
315gasguyz@acropolisrealtygroup.com

Although property information is from sources deemed reliable, no express representation is made nor is any to be implied as to the accuracy thereof. It is submitted subject to errors, omissions, change of terms or conditions, withdrawal without notice